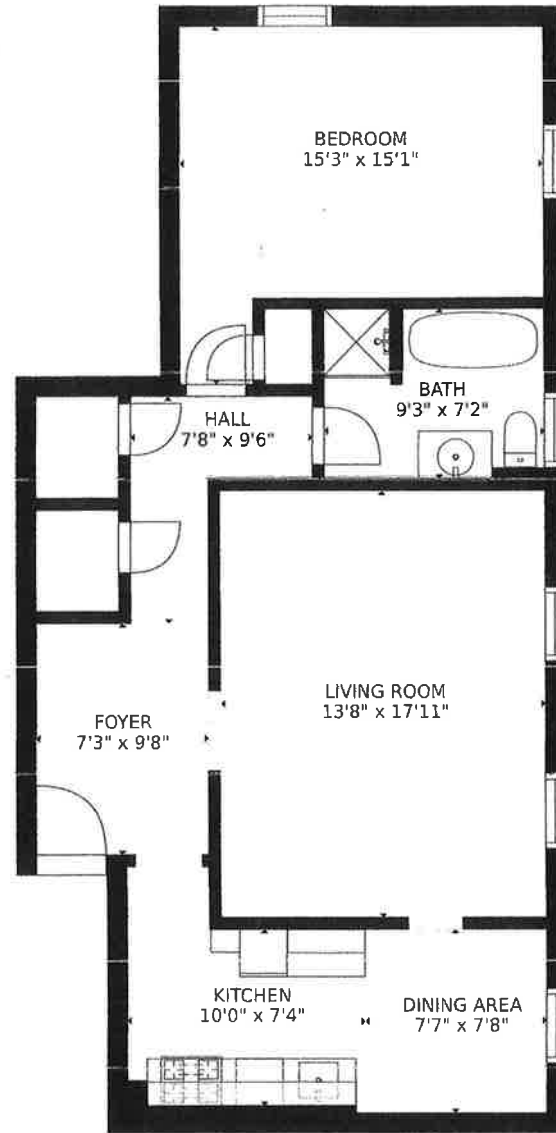


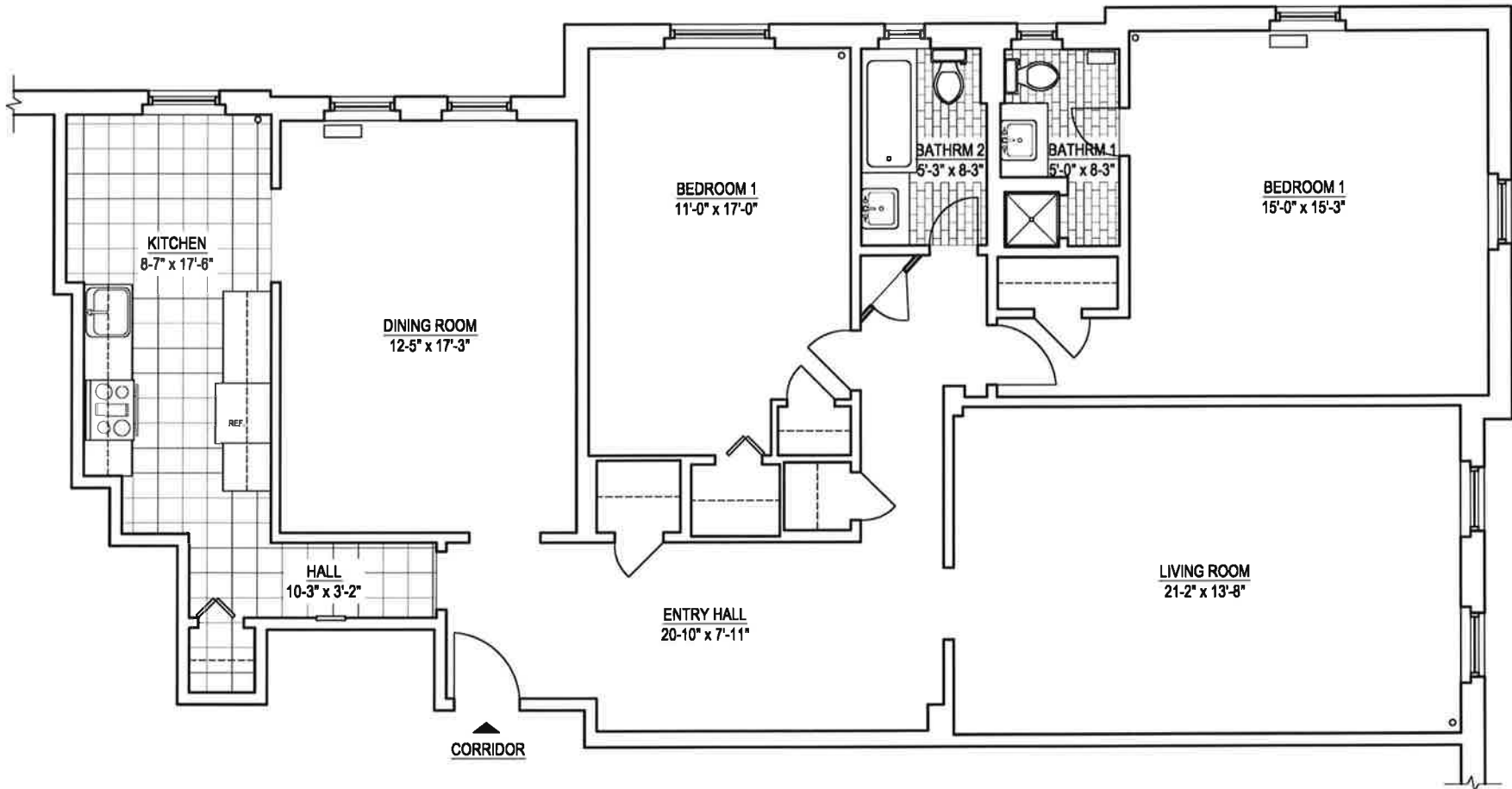
37 NORTH CENTRAL AVENUE  
"HARTSDALE GARDENS"  
APARTMENT 5H  
HARTSDALE NY 10530  
1120 SQ. FEET

SIZES AND DIMENSIONS ARE APPROXIMATE, ACTUAL MAY VARY

37 NORTH CENTRAL AVENUE  
"HARTSDALE GARDENS"  
APARTMENT 3J  
HARTSDALE NY 10530  
800 SQ. FT

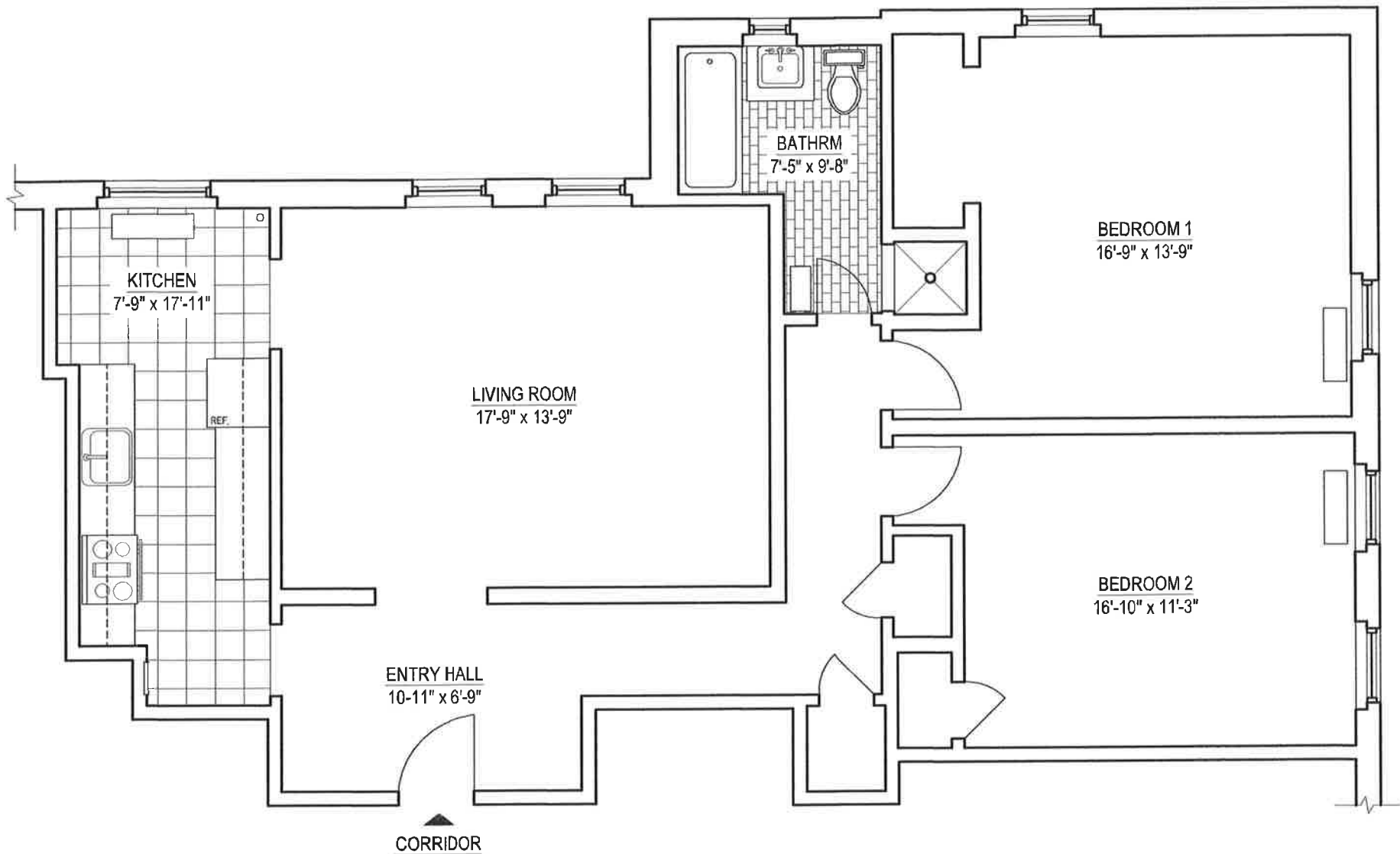


SIZES AND DIMENSIONS ARE APPROXIMATE, ACTUAL MAY VARY.



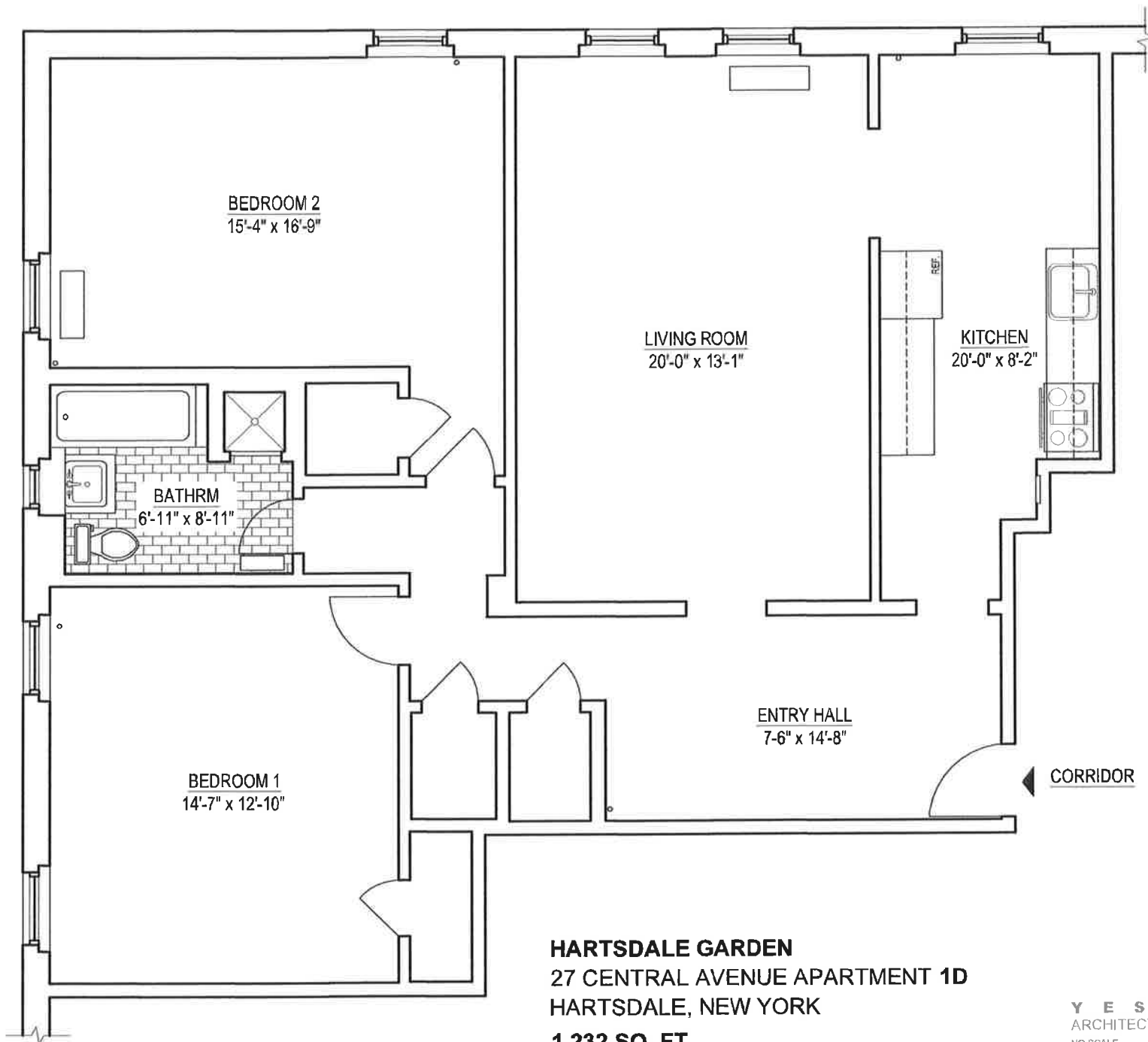
**HARTSDALE GARDEN**  
27 CENTRAL AVENUE APARTMENT 3A  
HARTSDALE, NEW YORK  
1,642 SQ. FT

**Y E S T A D T**  
ARCHITECTURE + DESIGN  
NO SCALE



**HARTSDALE GARDEN**  
27 CENTRAL AVENUE APARTMENT **2G**  
HARTSDALE, NEW YORK  
**1,148 SQ. FT**

**Y E S T A D T**  
ARCHITECTURE + DESIGN  
NO SCALE

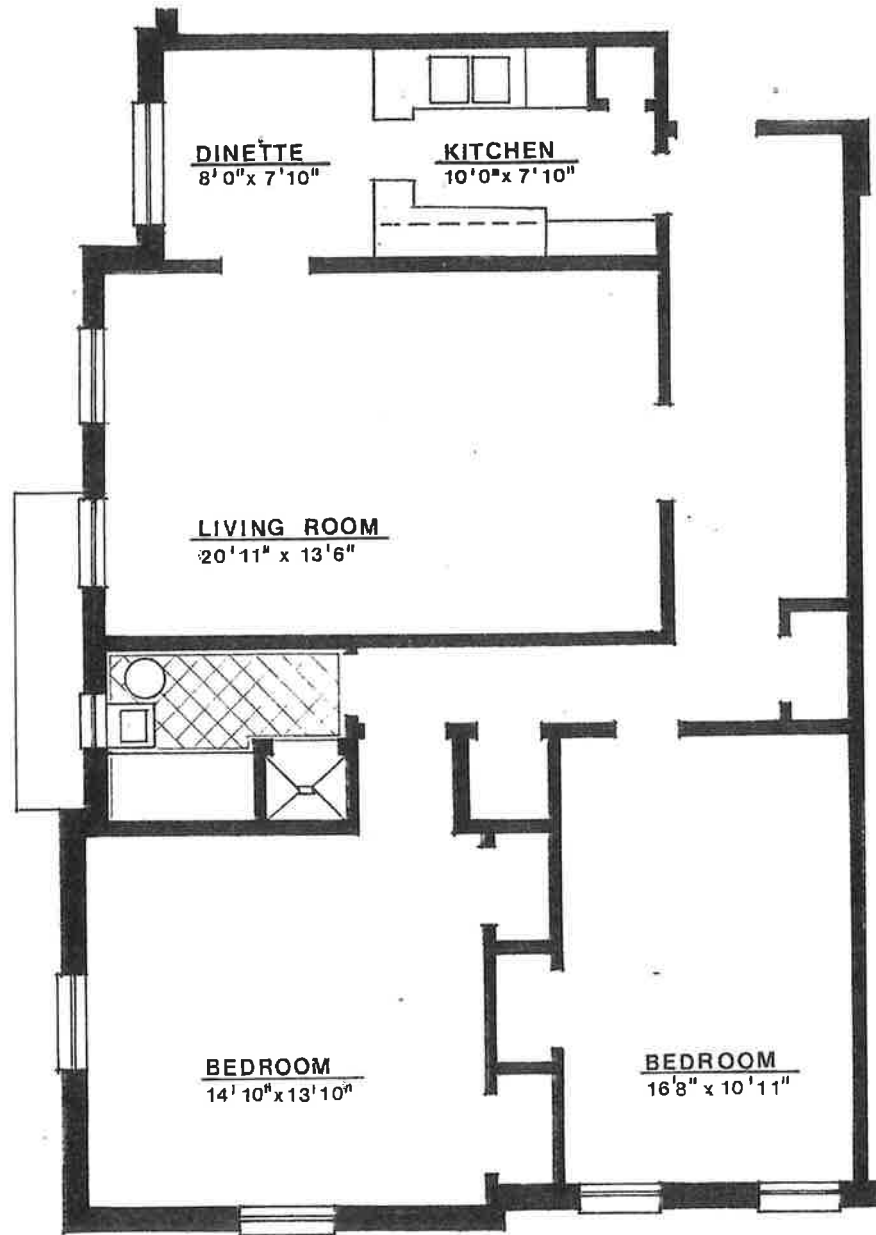


**HARTSDALE GARDEN**  
27 CENTRAL AVENUE APARTMENT 1D  
HARTSDALE, NEW YORK  
**1,232 SQ. FT**

**Y E S T A D T**  
ARCHITECTURE + DESIGN  
NO SCALE

**Units B and K 4½ Rooms**

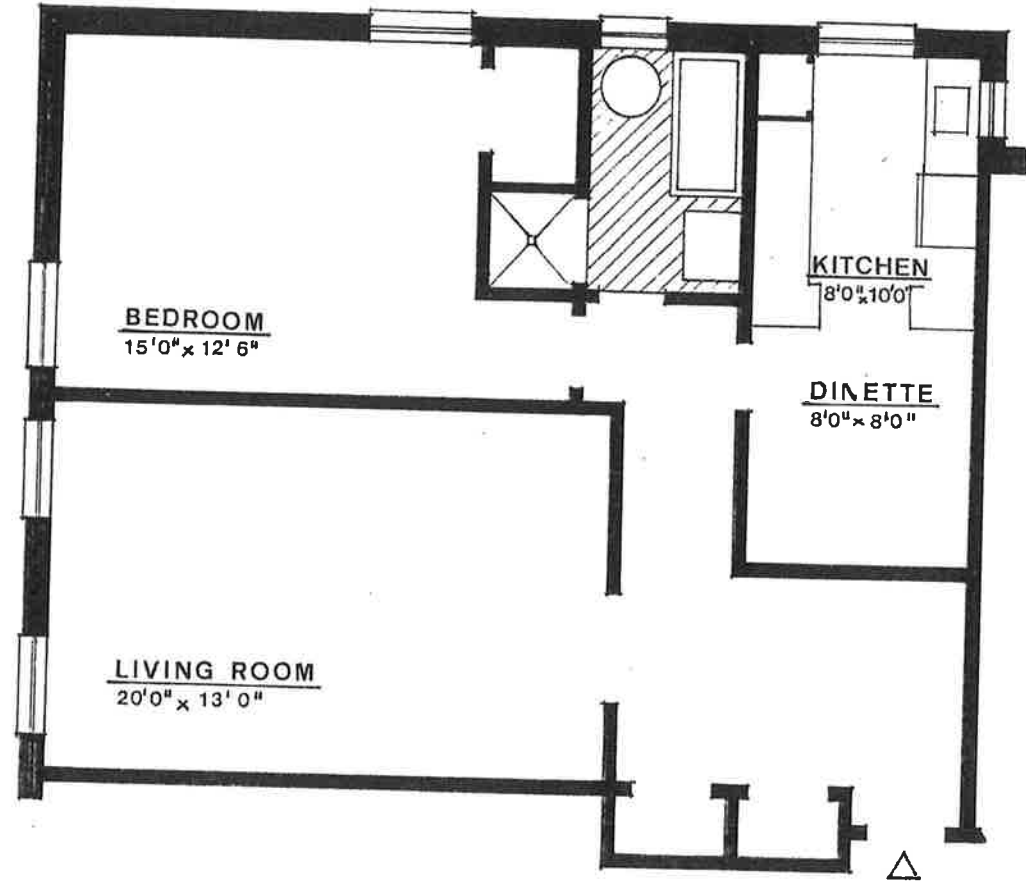
2 Bedrooms  
1 Bath



Hartsdale Gardens  
4½ Rooms B K  
2 Bedrooms  
1 Bath

**Unit F**    **3½ Rooms**

**1 Bedroom**  
**1 Bath**

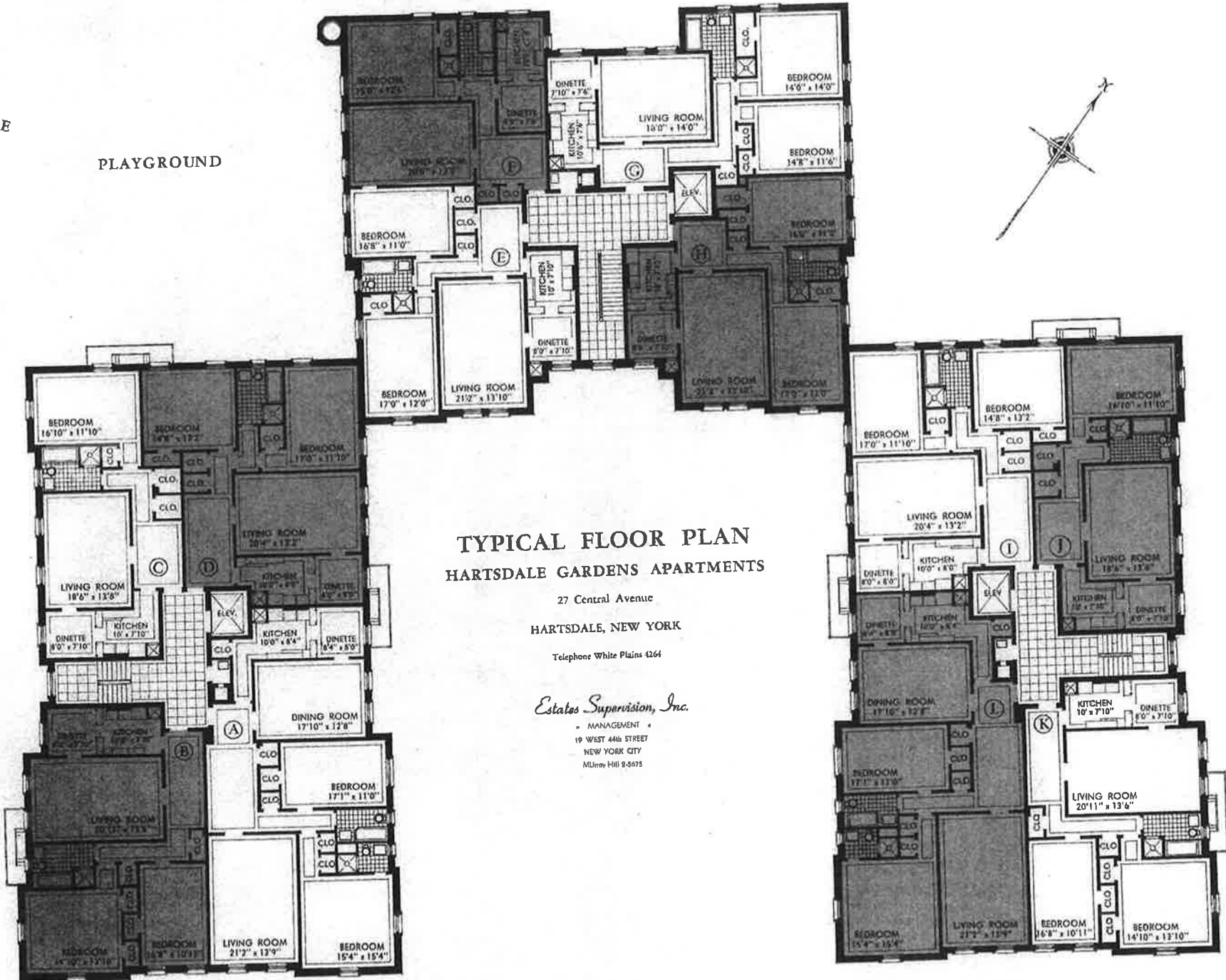


Hartsdale Gardens  
3½ Rooms F  
1 Bedroom  
1 Bath

GARAGE

PLAYGROUND

PARKING SPACE



### TYPICAL FLOOR PLAN HARTSDALE GARDENS APARTMENTS

27 Central Avenue  
HARTSDALE, NEW YORK

Telephone White Plains 4264

*Estates Supervision, Inc.*

MANAGEMENT  
19 WEST 44th STREET  
NEW YORK CITY  
Murray Hill 9-8675

CENTRAL AVENUE

SCALE: 1 INCH EQUALS 16 FEET  
DIMENSIONS ARE APPROXIMATE